

CHALLENGING ADAPTATION: SERVING THE DEVELOPMENTALLY DISABLED

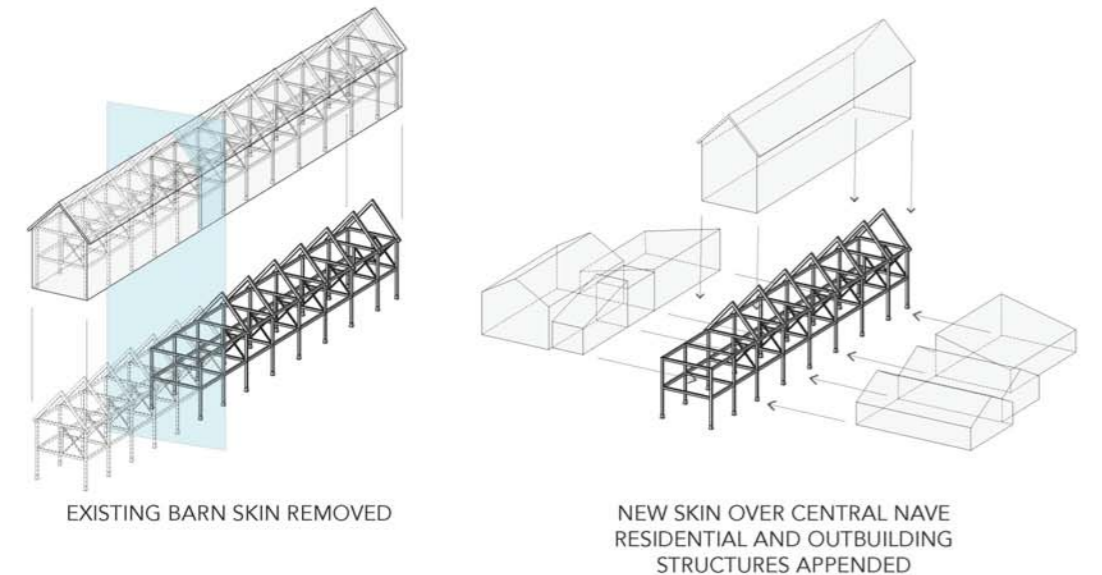
A new training facility for developmentally disabled adults in Ringwood, NJ

Approached as an adaptation of a historic barn & garage on the campus of the closing Mount Saint Francis Convent. Retaining an existing two-story timber frame, the new facility reinvents the structure into program rooms, common spaces with soaring ceilings, and caponied outdoor patios for protected client activity.

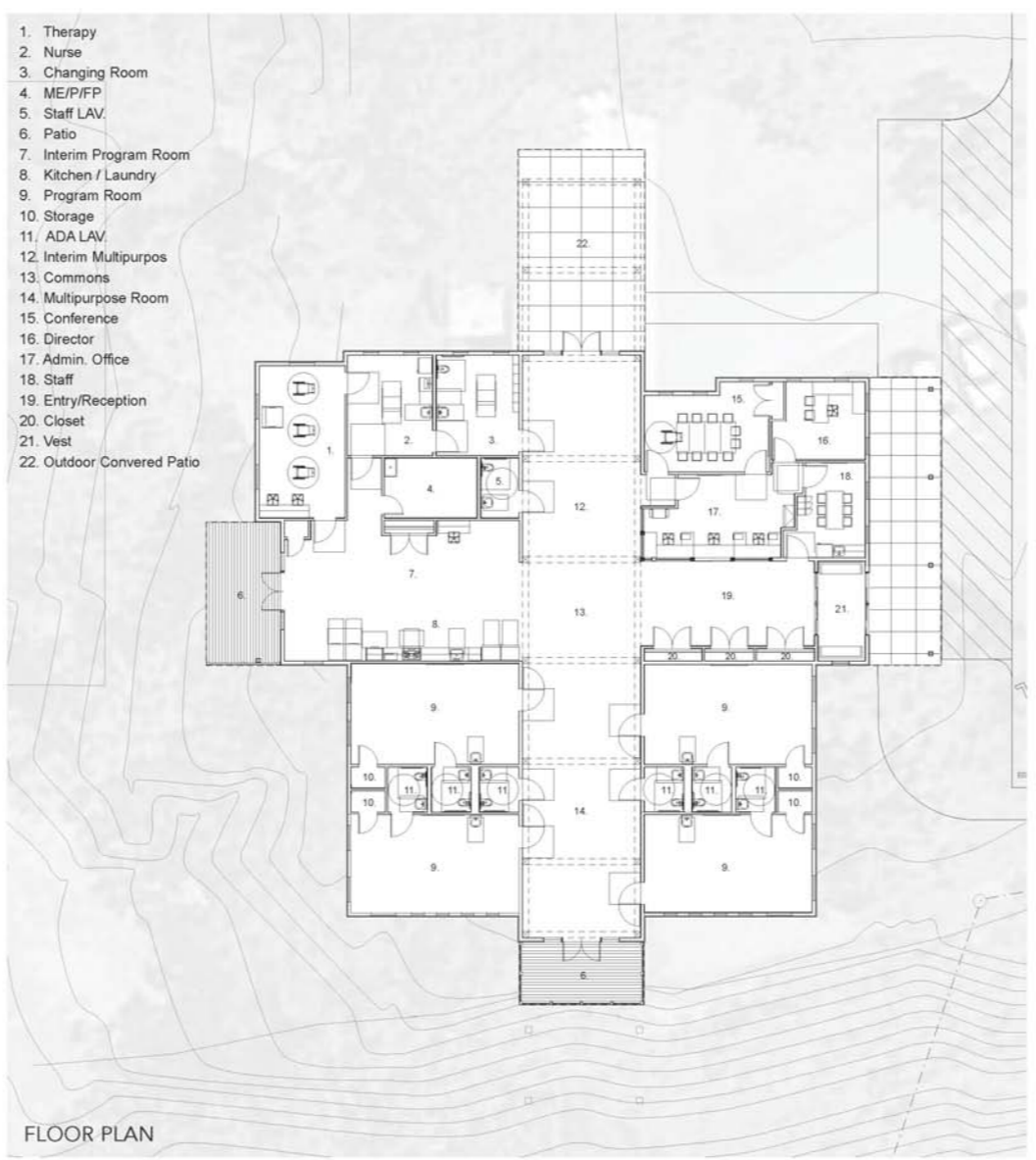
While many of the state's institutions for the developmentally disabled are housed in concrete block facilities, this center in rural Ringwood, NJ is conceived as a New England farmhouse complete with barn and outbuildings. A daytime training center that.

Serving 60 individuals and slated to open late Spring 2014, the project required a sensitive approach to regulation in the NJ Highlands Council, the NJ-DEP, and local planning commissions.

Our Architecture firm as planner was instrumental in negotiations with NJDEP regarding a development waiver in the Highlands district and this was a critical component of project services for this area not for profit.



VIEW FROM FRONTYARD



VIEW FROM BACKYARD

